



COFFEE CUP COASTER INSTRUCTIONS



Use our Coffee Cup Applique to make a unique Coffee Cup Coaster, or add to a Tea Towel (with a neat and tidy patch backing)



5X7 Hoop Required

MATERIALS

- Water Soluble Stabiliser
- 6x8 piece of:
 - Thin Pellon/Batting
 - Front Fabric
 - Backing Fabric
 - Small coffee colored fabric for top of coffee ** optional
- Matching Bobbin thread

CONSTRUCTION – COASTER

- Load design to machine
- Hoop 2 layers of Water Soluble Stabiliser
- Thread machine with a neutral color (we used tan throughout)



Stitch Color 1 – the
outline of the Cup



Place pellaon/thin
batting over the
Guideline and
Stitch Color 2 to attach



Place coffee fabric over
Guideline

Trim away excess fabric
where Cup Fabric will
go



Place Cup Fabric over
Guideline

Stitch Color 3 to attach



**** I created this design a few months ago, and now that I am writing up the instructions, I'm a bit stumped as to why I cut away the fabric around the edges – its easier to just trim around the edge of the cup fabric (no need to remove hoop from machine for that)

You can trim the excess fabric around the edges later after you have added the backing!!

I was going to re-do the photos, (the design is correct, just me who made an error) - then decided to leave it as is – see even seasoned digitisers/stitchers make mistakes. – I've done this type of design 100's of times!!



Complete Embroidery detail in your chosen colors

Color 5 – Quilting Cup
Color 6 – Quilting – Coffee
Color 7 – Word Coffee

****Skip the color if you do not want the quilting and/or wording**



Remove hoop from
Machine

Tape Backing Fabric in
place as pictured

WRONG-SIDE OF FABRIC
FACING HOOP



Return hoop to Machine

Stitch Color 8 to attach
backing



Remove hoop from Machine

Cut away excess Fabric on FRONT and back of hoop



Return hoop to Machine

Change bobbin thread to match Satin Stitch

Stitch Color 9 which zig zags, then stitches satin stitch edge



Remove from hoop

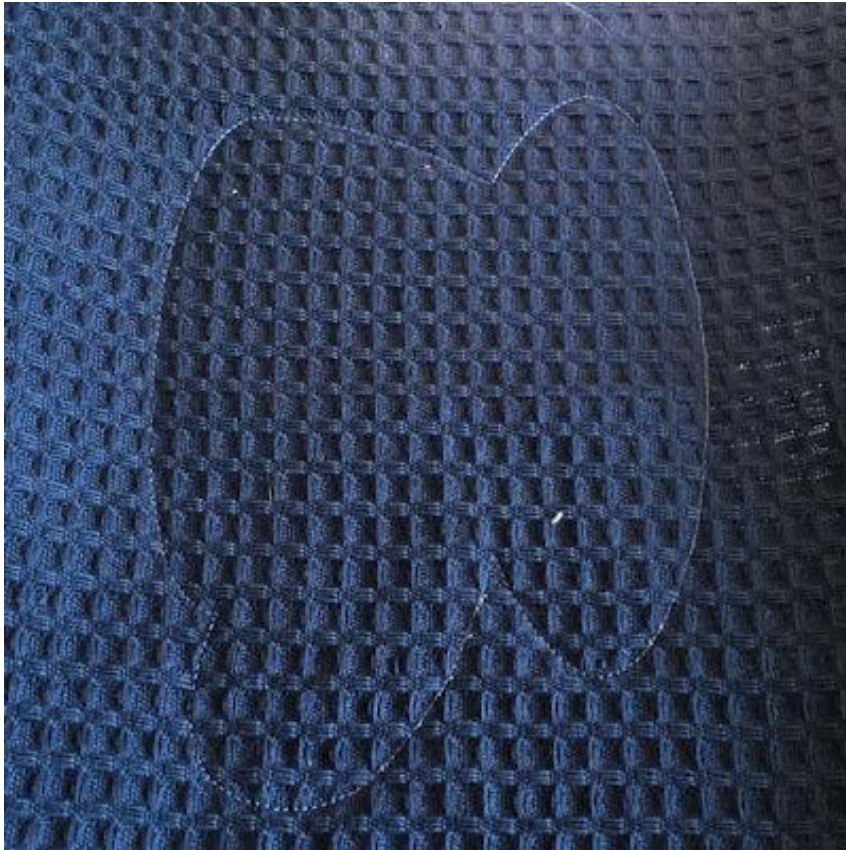
Cut away the excess
Stabiliser around the
edges

Use a Cotton Bud/Q Tip
and warm water to
dissolve any stabiliser left
on the edges

CONSTRUCTION – LINED PATCH – TEA TOWEL

- Load design to machine
- Hoop 2 layers of Water Soluble Stabiliser
- Thread machine with a neutral color (we used blue throughout)
- Mark centre placement on Tea Towel

I hoop Stabiliser only, then float the Tea Towel over the hoop – it's my personal preference only – I find it helpful for heavier towels. But your choice – you can hoop both stabiliser and towel – completely up to you.



Same as before,

Stitch Color 1 – the outline of the Cup

I only used one fabric in this sample, so I:

Placed App Fabric over this Guideline And

Stitched Color 2 to attach

I skipped Color 3 and 4



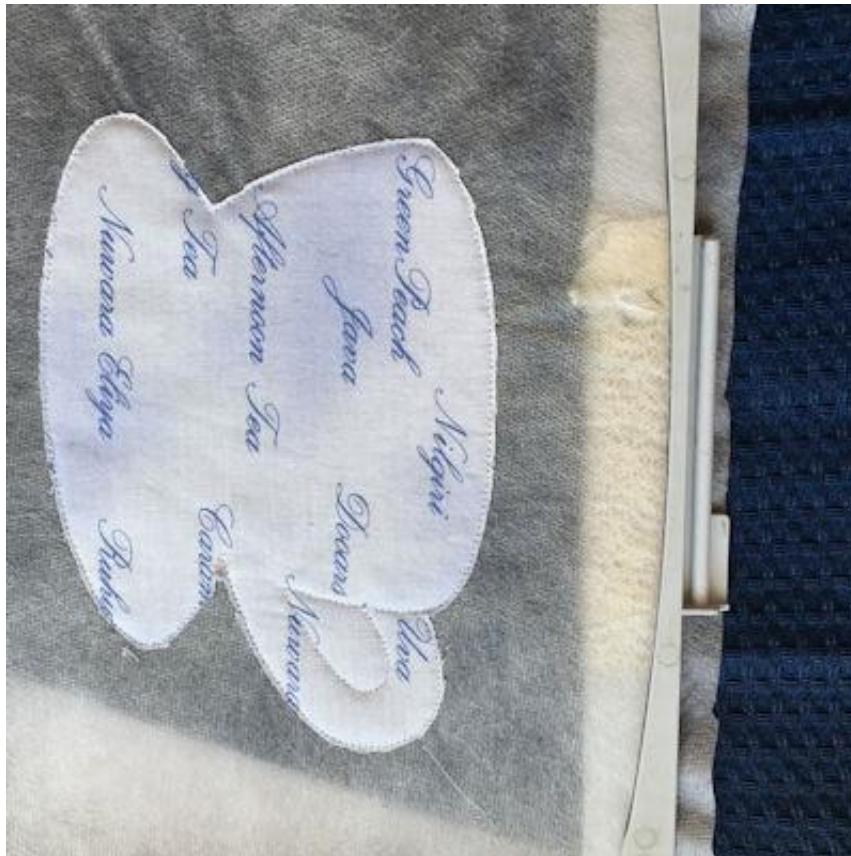
I also left out the Quilting on the Cup

So skipped Color 5

I stitched Color 6 – Coffee Quilting

And stitched Color 7 - Wording

I did want you to see the photo where I had completed all the embroidery without cutting away the edges LOL



Then, as before, I removed hoop from machine

Taped Backing Fabric in place

Returned hoop to Machine

Stitched Color 8 to attach Backing

Removed from hoop and cut away excess fabric on Front and Back



Return hoop to Machine

Stitched Color 9 - zig zag and Satin Stitch edging



Cut away excess Stabiliser, and use Cotton Bud/Q Tip to dissolve all Stabiliser

I use this Applique Patch Technique if I am gifting Towels – particularly heavy bath Towels – I think it gives a neat and tidy backing



[View similar Designs](#)

Be sure to Join [Kreative Kiwi Group](#) to share photos of your Designs (and see what fellow Machine Embroidery Addicts have created

Cheers Heather

Kreative Kiwi Embroidery Ltd holds the copyright to all embroidery designs and instructions on this website. These digitized embroidery designs are protected under International Copyright Law & Treaties. The designs and files cannot be sold, duplicated or shared in any way and are for use by the original purchaser/user only. You may not lend, give or sell the files to anyone else ever. You may not change, add to, delete parts of, or alter files and then call them you own.